

NEW

75Y1



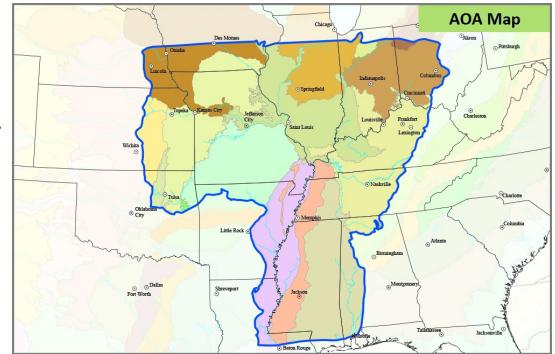
115 RM

75Y1PWRA™



The high performing hybrid is a great choice for getting to the next level. 75Y1 is very healthy and showy with extremely high yield potential. It has big, flex ears with excellent plant health. It is a taller product that works best when planted early and when highly managed. Plant this new product with confidence.

- Plant early for best performance
- Good foliar disease tolerance
- Best performance in highly productive soils
- Later version of 71C1
- Ability to handle various population ranges
- Strong performance across various environments



POSITIONING AND MANAGEMENT

2780 GDUs to Black Layer	M-H Pop. Range	Flex Ear Type	R Cob Color
16-20 Kernel Rows	R Corn-on-Corn	HR Conventional Tillage	HR No-Till
NR Timber Soil	R Poorly Drained Soil	NR Sandy Soil	HR Early Planting Date
R Delayed Harvest	R Response to Fungicide	HR Corn-on-Soybean	NR Late Planting Date
28-34 Recommended Population	1415 GDUs to Mid-Silk	M-T Plant Height	M-H Ear Height
M Canopy Type	<p>Herbicide Tolerance</p>		

RATINGS KEY: 9 = OUTSTANDING 1 = POOR

- 9 Best-in-class performance in a given situation or growing environment
- 7-8 Good to very good adaptability to a given situation or growing environment
- 5-6 Average to slightly above average adaptability to a given situation or growing environment
- 1-4 Avoid using a product in a given situation or growing environment
- NA Rating not available

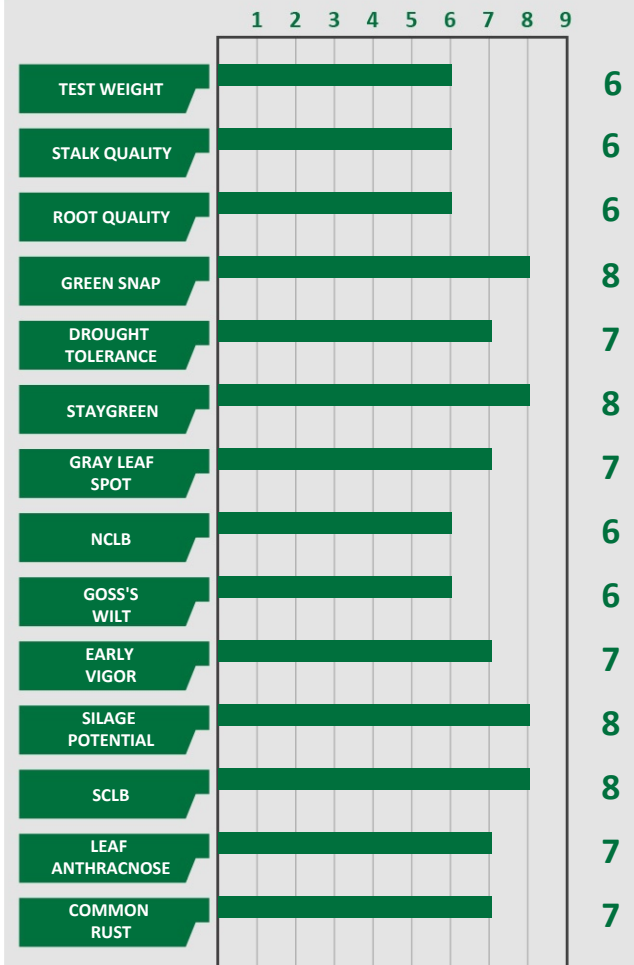
PLANT AND EAR HEIGHT:

- T = Tall
- M = Medium
- S = Short
- H = High
- L = Low

- HIGH-YIELD
- CORN-ON-CORN
- HEAT/DROUGHT-STRESSED
- POORLY DRAINED

COB COLOR: R = Red, P = Pink, W = White

AGRONOMICS



Area of adaptation map: Consult with a NuTech representative for planting outside of AOA recommendation. NuTech AOA maps are based on EPA III ecoregions. U.S. Environmental Protection Agency, 2013, Level III ecoregions of the continental United States: Corvallis, Oregon, U.S. EPA – National Health and Environmental Effects Research Laboratory, map scale 1:7,500,000, <https://www.epa.gov/eco-research/level-iii-and-iv-ecoregions-continental-united-states>.

NuTech Seed warrants that seed sold by it conforms to the label description on the seed packaging within tolerances established or permitted by law. This warranty excludes and is in lieu of all other warranties, expressed or implied, including any warranty of merchantability or fitness for a particular purpose, which are hereby disclaimed. Important: Characteristic scores provide key information useful in selecting and managing products in your area. Information and scores are assigned by NuTech Seed and are based on period-of-years testing through 2017 harvest and were the latest available at time of printing. Some scores may change after 2018 harvest. Scores represent an average of performance data across areas of adaptation, multiple growing conditions, and a wide range of both climate and soil types, and may not predict future results. Individual product responses are variable and subject to a variety of environmental, disease and pest pressures. Please use this information as only one component of your product positioning decision.

Seed products with the LibertyLink® (LL) trait are resistant to the herbicide glufosinate ammonium, an alternative to glyphosate in corn, and combine high-yield genetics with the powerful, non-selective, post emergent weed control of Liberty® herbicide for optimum yield and excellent weed control. Liberty is not registered for use in all states. Always follow grain marketing, stewardship practices and pesticide label directions. Roundup Ready® crops contain genes that confer tolerance to glyphosate, the active ingredient in Roundup® brand agricultural herbicides. Roundup® brand agricultural herbicides will kill crops that are not tolerant

to glyphosate. Individual results may vary, and performance may vary from location to location and from year to year. This result may not be an indicator of results you may obtain as local growing, soil and weather conditions may vary. Growers should evaluate data from multiple locations and years whenever possible. Product performance in water-limited environments is variable and depends on many factors such as the severity and timing of moisture deficiency, heat stress, soil type, management practices and environmental stress as well as disease and pest pressures. All hybrids may exhibit reduced yield under water and heat stress. Individual results may vary. Herculex® I Insect Protection, Herculex® XTRA Insect Protection and Herculex® RW Rootworm Protection, technology by Dow AgroSciences and Pioneer Hi-Bred. AMX - Optimum® AcreMax® Xtra Insect Protection system with YGCB, HXX, LL, RR2. Contains a single-bag integrated refuge solution for above- and below-ground insects. In EPA-designated cotton growing counties, a 20% separate corn borer refuge must be planted with Optimum AcreMax Xtra products.

®, TM, SM Trademarks and service marks of DuPont, Dow AgroSciences or Pioneer, and their affiliated companies or their respective owners.

® YieldGard, the YieldGard Corn Borer Design and Roundup Ready are registered trademarks used under license from Monsanto Company.

® Liberty, LibertyLink, the Water Droplet Design are registered trademarks of Bayer..

©2018 NuTech Seed®